



SHEETROCK®

PLASTERBOARD AND COVE CORNICES

USG BORAL
INNOVATION INSPIRED BY YOU.™



SHEETROCK®

LIGHTER. STRONGER. SMARTER.

Australia's lightest plasterboard* with exceptional sag resistance.

Featuring Sag-Defying Strength™ and 15% LIGHTER* than our standard plasterboard, SHEETROCK® is SUPERSTRONG – making it easier to work with, saving on installation time, maintenance and costs. It's the smarter alternative.



WINNER

2016 Innovation of the Year Award
*As chosen by Home Timber and Hardware Group
independent store owners from a field of nine entries.*

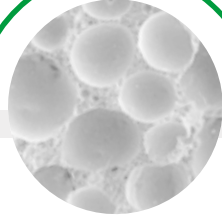
*Lightweight claims based on comparison of USG Boral 10mm Sheetrock with USG Boral's Regular core plasterboard in Australia, as at 1st September 2016.



REAL SCIENCE-BASED INNOVATION

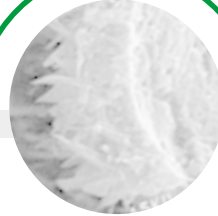
STRUCTURE

Using USG Boral's unique patented technology, SHEETROCK® Plasterboard has an enhanced bubble structure consistent through the core. (Tested against a competitor lightweight plasterboard product on average, as at 1st September 2016)



CORE STRUCTURE (in millimetres)

The enhanced, lightweight core structure is visibly different from any other plasterboard.



CORE BUBBLE STRUCTURE (in millimetres/microns)

Reinforced layers in the bubbles' walls strengthen the cores bubble structure, providing improved flexural strength even at a lower weight.



CRYSTAL STRUCTURE (in microns)

Patented technology fuses together the gypsum crystals - to enhance the strength of their interlocking structure. This fusion creates Sag-Defying Strength™.

PERFORMANCE

Tested against a competitor lightweight plasterboard product on average, as at 1st September 2016.

When tested against a competitor lightweight 10mm plasterboard Ceiling Board (on average) is stiffer, with better nail and glue pull capacity. Which makes it one of the leading products in the market, as at 1st September 2016.

SHEETROCK® with its stronger core structure, allows for R5 insulation at centre spans of 600mm.

SUPERIOR GLUE PULL CAPACITY¹

Reduces the risk of bonding failure as a result of poor adhesion.



GLUE PULL



STIFFER / STRONGER (LOADED SAG)²

Stronger sag performance reduces the risk of ceiling failure under load.



LOADED SAG



GREATER NAIL PULL CAPACITY¹

Increased mechanical adhesion reduces the reliance on glue.



NAIL PULL



LIGHTWEIGHT

Easier to handle and install, approx 1.6kg lighter per sheet (1350mm x 6000mm).



LIGHTWEIGHT



¹ Based on testing, in accordance with Australia Standards, AS2588 (32°C and 90%RH), as at 1st September 2016

² Based on sag testing, in accordance with Australian Standard, AS2589 (32°C and 90%RH), as at 1st September 2016

SHEETROCK®



WALL BOARD 10mm STANDARD 13mm

SHEETROCK® Wall and Standard Boards are USG Boral's engineered lightweight alternative to regular core 10mm and 13mm plasterboards. The plasterboard panels feature a patented high strength-to-weight composite design and stronger alternative to USG Boral's regular core that allows for a sharper score and snap than standard plasterboard. Additionally the core is tougher along the edges than standard plasterboard, reducing the likelihood of blowouts.

It is certified by Good Environmental Choice Australia (GECA) and may contribute to Green Star points.

ADVANTAGES

- Lightweight, easy to install and handle
- Bubble structure means improved score and snap
- Stiffer, less breakage/damage on site
- Stronger edges, results in less blow-outs

Feature	Description
Thickness	10mm, 13mm
Edge Profiles	Recessed Edge, Recessed Edge/Square Edge
Paper Colour	Buff
Mass	5.4kg/m ² 6.9kg/m ²



CEILING BOARD 10mm

SHEETROCK® Ceiling Boards are a lightweight alternative to regular Unispan® 10mm plasterboard.

It is stiffer than regular plasterboards, which means that it can support R5 insulation with 600mm centre spans.

Greater sag resistance over standard plasterboard allows for reduced maintenance from potential long term ceiling creep under load.

It is certified by Good Environmental Choice Australia (GECA) and may contribute to Green Star points.

ADVANTAGES

- Lightweight, easy to install and lift overhead
- Improved strength, reduced loss transporting to site
- Stiffer, improved loaded sag performance over time
- Stronger structure, allows for R5 insulation at centre spans of 600mm

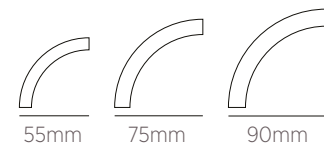
Feature	Description
Thickness	10mm
Edge Profiles	Recessed Edge
Paper Colour	Buff
Mass	5.9kg/m ² nominal



COVE 55/75/90mm

SHEETROCK® Cove is USG Boral's new lighter, stronger, smarter paper face cornice (compared to the old USG Boral Cove Cornice). Utilising innovative core technology, with a high strength-to-weight composite design.

Encased in a strong 100% recycled paper liner, SHEETROCK® Cove provides a rigid cornice making carrying, handling and installing easy.



ADVANTAGES

- Lightweight, high strength-to-weight composite design
- Greater rigidity for ease of handling and installation
- Easy to cut, mitre and clean up
- Consistent profiles with clean lines

Feature	Description
Thickness	10mm
Edge Profiles	55mm, 75mm, 90mm
Paper Colour	Buff
Mass	55mm (58kg/100Lm) 75mm (90kg/100Lm) 90mm (118kg/100Lm)

For product range and availability, please visit USGBoral.com

TESTIMONIALS

**CONTRACTOR:
R&S COMMERCIAL**

“ Our team noticed improved board quality and better-than-usual score and snap. The impressive part was it stayed completely intact when they drilled holes in the board for the uni-struts – this would normally result in a few sheets cracking and fracturing in the core.

The team were able to power through the project – they weren't as fatigued as usual and as a result needed less breaks. They finished the project a half day earlier than planned and so got to go home (on a Friday) resulting in half a day less labour I have to pay.

I am completely converted – normal plasterboard is finished for me. There's no point using ordinary plasterboard any more.

Richard
R&S Commercial Contractors,
SA Director

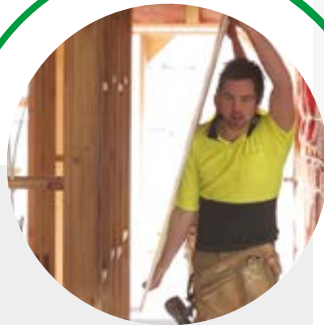
**BUILDER:
FAIRMONT HOMES**

SHEETROCK® Ceiling Board's Sag-Defying Strength™ has enabled Fairmont Homes to increase the R-Value of the insulation used in their ceilings to an R5 Batt without the need to add battens to take the additional weight load in the ceiling.

Once they realised SHEETROCK® Plasterboard could help make their plastering contractors more productive while still delivering a high level of finish, the decision was easy to move to SHEETROCK®.



Scan image for video
COMMERCIAL



Scan image for video
RESIDENTIAL

Bring our Commercial and Residential SHEETROCK® video to life in your pocket!



PRODUCT INFORMATION

See USGBoral.com for the most up-to-date product information.

SALES ENQUIRIES

1800 003 377

TECHNICAL ASSISTANCE

TecASSIST™ – 1800 811 222

NOTE

Products described here may not be available in all geographic markets. Consult your USG Boral sales office or representative for information.

There are many variables that can influence construction projects, which affect whether a particular construction technique is appropriate. Before proceeding with any project, we recommend you obtain professional advice to ascertain the appropriate construction techniques to suit the particular circumstances of your project. We recommend you use qualified tradespersons to install this system.

The technical information contained in this manual was correct at the time of printing. Building systems, details and product availability are, however, subject to change. To ensure the information you are using is current, USG Boral recommends you review the latest building information available on the USG Boral website. For further information, contact TecASSIST™ or your nearest USG Boral sales office.

UB1007-PLA 10/16

All rights reserved. The trademarks USG Boral, INNOVATION INSPIRED BY YOU, Sag-Defying Strength and TecASSIST are trademarks of USG Boral Building Products or one or more of its affiliates. SHEETROCK is a trademark owned by United States Gypsum Company and used under license. *Lightweight claims based on comparison of USG Boral 10mm and 13mm SHEETROCK plasterboard with competitive 10mm and 13mm plasterboard produced in Australia as at 1 September 2016. See more at: USGBoral.com/sheetrock This technical information is intended to provide general information on plasterboard products and should not be a substitute for professional building advice. We recommend you use a qualified person to install USG Boral plasterboard. Illustrations in this guide are only representative of USG Boral plasterboard products and the appearance and effects that may be achieved by their use. To ensure the information you are using is current, USG Boral recommends you review the latest building information available on the USG Boral website USGBoral.com The opinions expressed in the testimonials provided by R&S Commercial Contractors SA and Fairmont Homes are the opinions of those third parties and should not be taken to reflect the views or opinions of USG Boral. USG Boral Building Products Pty Limited – ABN 84 004 231 976 251 Salmon Street, Port Melbourne, VIC. 3207